

# FITC-Labeled Human EGFR/HER1 Protein

Cat. No. EGF-HM401F

## Description

|                         |  |
|-------------------------|--|
| <b>Source</b>           | Recombinant FITC-Labeled Human EGFR/HER1 Protein is expressed from HEK293 with His tag and Avi tag at the C-Terminus.<br>It contains Leu25-Ser645. |
| <b>Accession</b>        | P00533-1   |
| <b>Molecular Weight</b> | The protein has a predicted MW of 71.5 kDa. Due to glycosylation, the protein migrates to 90-115 kDa based on Tris-Bis PAGE result.                |
| <b>Wavelength</b>       | Excitation Wavelength: 490 nm<br>Emission Wavelength: 520 nm   |
| <b>Endotoxin</b>        | Less than 1EU per ug by the LAL method.  |
| <b>Purity</b>           | > 95% as determined by Tris-Bis PAGE<br>> 95% as determined by HPLC  |

## Formulation and Storage

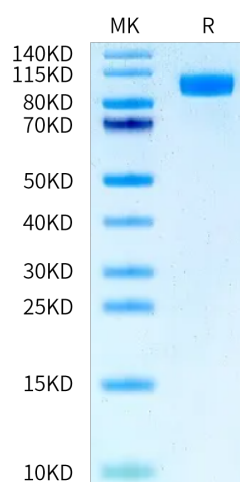
|                       |  |
|-----------------------|--|
| <b>Formulation</b>    | Lyophilized from 0.22 µm filtered solution in PBS (pH 7.4). Normally 8% trehalose is added as protectant before lyophilization.  |
| <b>Reconstitution</b> | Centrifuge the tube before opening. Reconstituting to a concentration more than 100 µg/ml is recommended. Dissolve the lyophilized protein in distilled water.   |
| <b>Storage</b>        | -20 to -80°C for 12 months as supplied from date of receipt. -80°C for 3-6 months after reconstitution. 2-8°C for 2-7 days after reconstitution. Recommend to aliquot the protein into smaller quantities for optimal storage. Please minimize freeze-thaw cycles. |

## Background

The epidermal growth factor receptor is a transmembrane protein that is a receptor for members of the epidermal growth factor family of extracellular protein ligands. The epidermal growth factor receptor is a member of the ErbB family of receptors, a subfamily of four closely related receptor tyrosine kinases: EGFR, HER2/neu, Her 3 and Her 4. Receptor tyrosine kinase binding ligands of the EGF family and activating several signaling cascades to convert extracellular cues into appropriate cellular responses.

## Assay Data

### Tris-Bis PAGE



FITC-Labeled Human EGFR on Tris-Bis PAGE under reduced condition. The purity is greater than 95%.

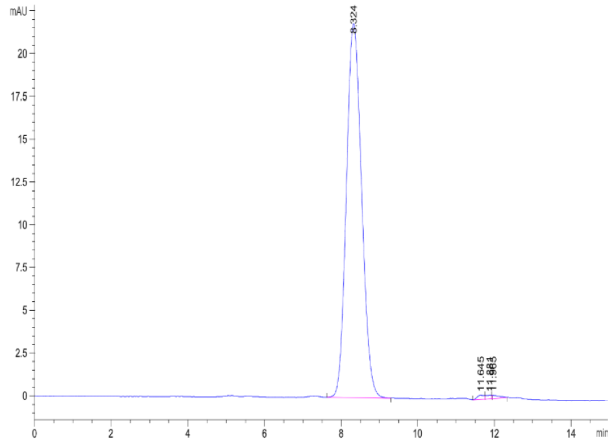
### SEC-HPLC

# FITC-Labeled Human EGFR/HER1 Protein

Cat. No. EGF-HM401F



## Assay Data



The purity of FITC-Labeled Human EGFR is greater than 95% as determined by SEC-HPLC.